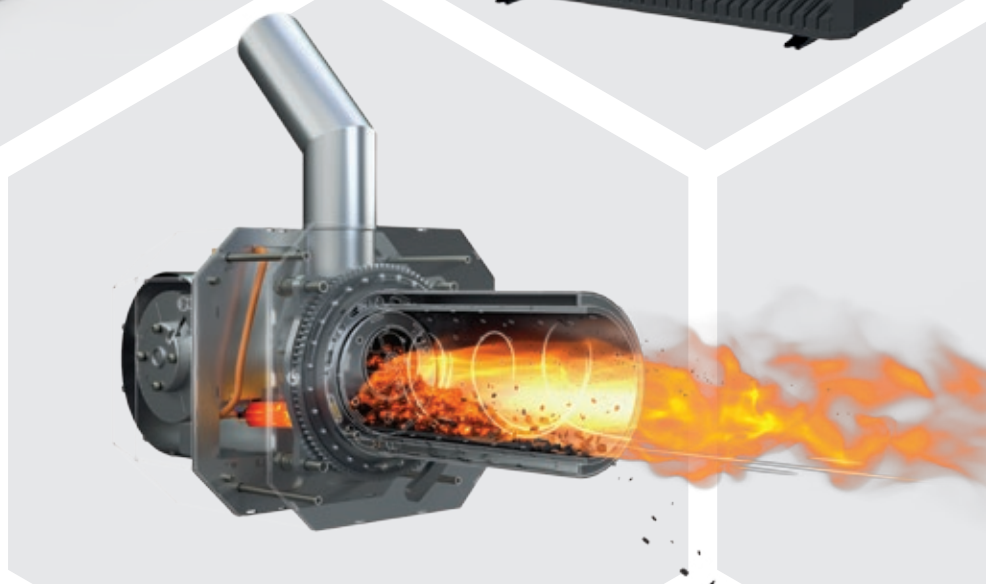


# **KIPI**

## *PRODUCT CATALOGUE*





The KIPI brand was established in 2013 as a part of the BTI Gumkowski group, which has delivered technological solutions for industry since 1994. We are one of leading producers of pellet burners in Poland. Our product range includes not only many types of pellet burners and air heaters but also complementary devices. We work with leading boiler manufacturers providing burners and other technological solutions to increase the efficiency and quality of boilers. Our distribution network covers almost 150 authorised fitters and our devices are installed in households and industrial facilities in Poland and abroad.

## TIMELINE

### Establishment of BTI Gumkowski

Jan Gumkowski Technical and Engineering Office started out by specialising in finding industrial solutions, designing and constructing technological lines and unusual machines and devices.

1994

2009

2010

2011

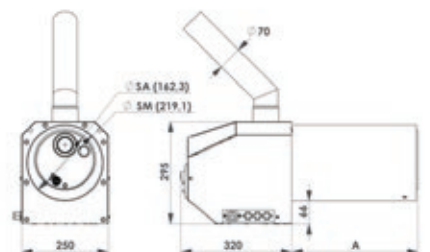
### Burner idea

Our own experience with the pellet burner in our facility made us look for improvement in order to make maintenance more convenient.

### Problematic burner

In order to lower the costs of heating the factory, we purchased a traditional pellet burner. We really liked the idea of fuel in the form of pellets. Satisfaction with our decision slowly turned into frustration. We had to clean the burner more and more often, which was very tiresome.

### Burner prototype







*"Our main goal is to be a reliable partner for our clients and an expert in what we do. We strive to ensure that the products we offer are of the highest quality and reliability. Our priority is also to protect the environment, which is why our devices meet the most stringent standards for the emission of harmful substances into the atmosphere."*

**Jan Gumkowski - Board Chairman BTI Gumkowski**

### Creation of the first KIPI burner



2013  
2015

### Export expansion

After the success of the burners on the Polish market, sales expanded abroad and reached Lithuania, Latvia, Estonia, Greece, the Czech Republic, Belarus, Russia, Sweden and Finland.

### Market launch of the Heat Pumps



2019

### New Headquarters

Due to a sudden increase in sales, we decided to build new headquarters with a production hall to increase production capacity.

### Market launch of the heater



2021

### Hydrobox market entry



### Ventura Mobile launch



2023

## **COOPERATION WITH US**

Not only distributors from Poland appreciate our quality and innovative products, as do many international partners in almost all European countries.



## ***BENEFITS FROM COOPERATION***

To assist our partners, we provide the necessary marketing and know-how support. We deliver regular product and service training, and make announcements about our products or campaigns. It is essential for us to recognise our client's needs and meet them by offering flexible solutions.

### ***TECHNICAL SUPPORT***



Product training

+



Service training

+



Sales training

### ***MARKETING SUPPORT***



Advertising materials

+



Events

+



Advertising campaigns

### ***ADDITIONAL SUPPORT***



Access to the partner area

+



Technical support

+

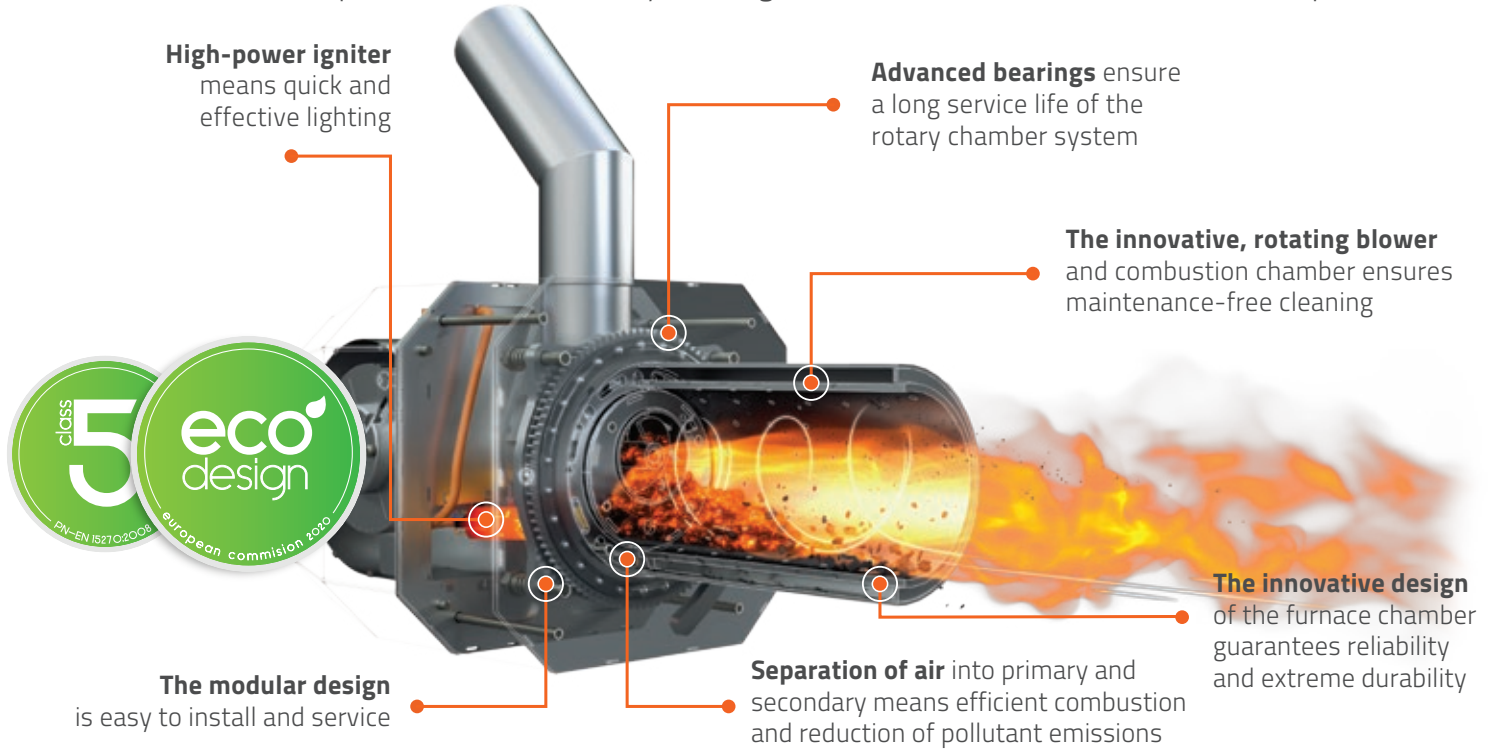


Service App

## ROTARY BURNER

This innovative burner with a **rotating combustion chamber** revolutionised the biomass market. Thanks to patented technologies, it solves key problems faced when operating pellet-powered heating devices and is **almost maintenance-free**, extremely economic and ecological. A rotary furnace chamber cleans itself from ashes and slags. It makes a burner operate effectively on a continuous basis, without any power drops and it never gets clogged.

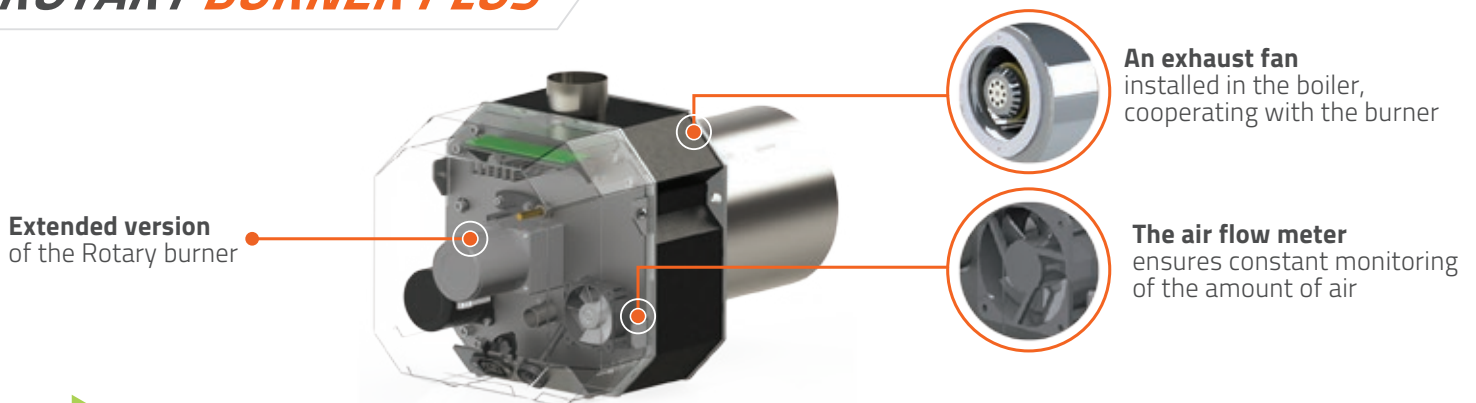
The burner is also equipped with a system dividing the air into the primary and boosting air, what guarantees effective pellet combustion even if its quality does not fall within the DIN classification. This technology is protected by a patent of the Patent Office of the Republic of Poland. Currently, our range includes burner models from 3 to 300 kW power.



Available powers:



## ROTARY BURNER PLUS



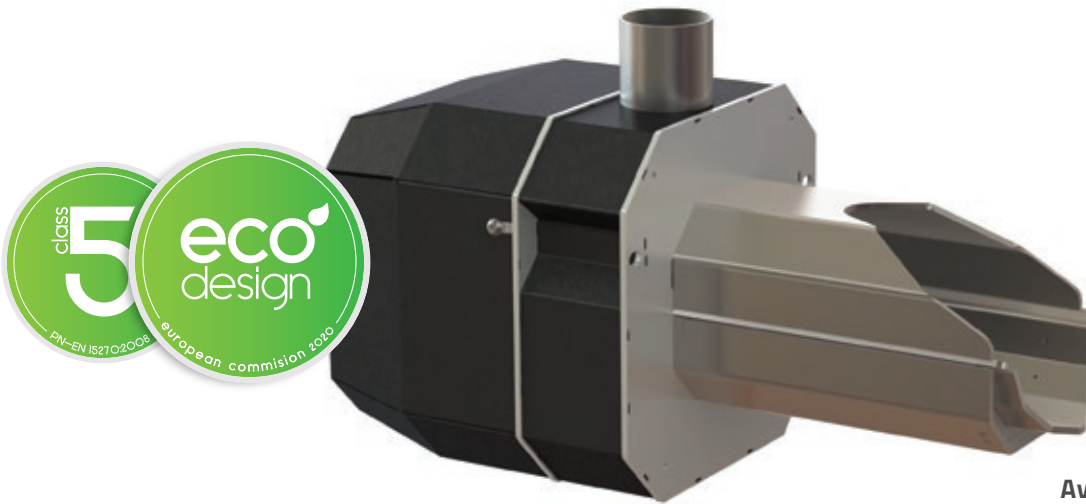
Available powers:





## BASIC BURNER

The BASIC pellet burner is a device with a very simple structure, characterised by **high efficiency** of pellet burning. Pellet which is a completely ecological product is a perfect alternative mostly to fossil fuels. A BASIC burner is suitable for boiler room modernisation and its simple installation and low costs definitely make it an excellent choice. Moreover, these burners – as rotary burners – may be **controlled remotely**, what improves usage comfort significantly. We encourage you to familiarise with a new version of the burner – BASIC PLUS. You can read about this burner below.



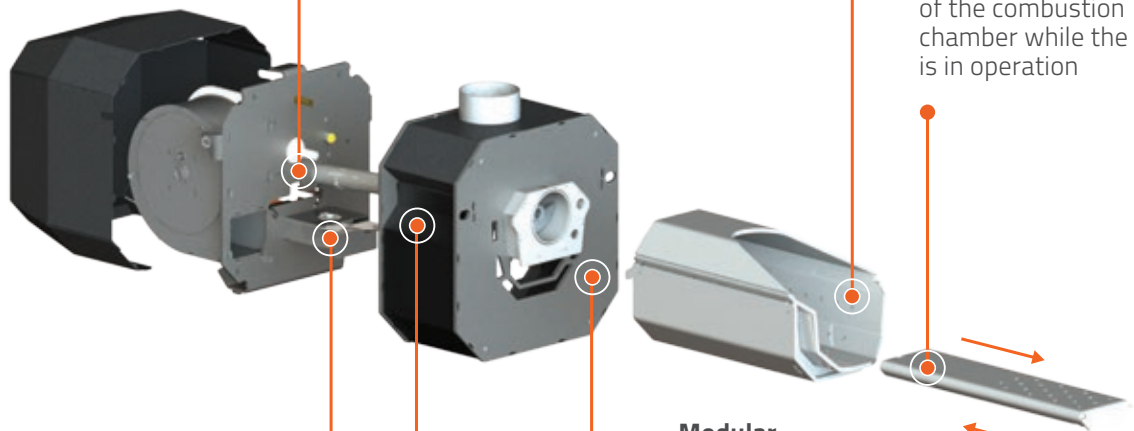
Available powers:  
16 kW 20 kW 26 kW

## BASIC PLUS BURNER WITH MOVABLE GRATE

**High-quality igniter**  
that guarantees quick ignition

**Cooled side walls of the furnace**  
ensuring safety of use

**Movable grate** that  
guarantees cleaning  
of the combustion  
chamber while the burner  
is in operation



**Reliable drive  
of Belimo grates**

**Modular  
Design**

**Mounting clip**  
for quick service (optional)

Available powers:  
16 kW 20 kW 26 kW

## VENTURA AIR HEATER

The **VENTURA air heater**, apart from the modern design, stands out mainly for its three-pass, counter-flow-cross heat exchanger and a system of steady air distribution through the exchanger. The combination of these solutions ensures the highest efficiency in air heating compared to other devices available on the market. The heater uses a **ROTARY burner**, which allows very good combustion parameters and low emissivity to be maintained. The entire device is convenient in use, with easy access to the exchanger and automatic ash removal system. The ash is collected in a special mobile container. This means that maintenance-free operation time of the device has been significantly extended.



The **adjustable air outlet** allows you to direct the heat stream in any direction. Thanks to the use of thermostatic regulators, it is possible to distribute air in such a way that an independent temperature is maintained in each of up to 4 rooms. The device allows you to choose the opening door orientation – left or right – which makes it easier to adapt while installed. In addition, the entire structure is **easy to clean and service**, which reduces the time of device maintenance to a minimum. It is also possible to deliver a heater with full recirculation, which further reduces heating costs.





# VENTURA MOBILE AIR HEATER

NEW

Outdoor and mobile version of **VENTURA** gives a lot of possibilities such as using for temporary heating systems, events or construction sites and renting.

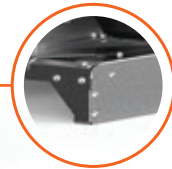
Vacuum system



Integrated flue system



Mobility



ODM OEM



## VACUUM

- ✓ The ability to collect pellets from a distance of up to 10 m.
- ✓ Possibility of installation outside - thanks to the installation of the device, there is no need to build a boiler room.
- ✓ Integrated flue system.

## MOBILITY

- ✓ Transport using a pallet truck.
- ✓ Use for temporary heating systems (events, construction sites, etc.).
- ✓ The possibility of renting the device.

Available powers:



HALLS AND WAREHOUSES



CHURCHES



WORKSHOPS



GREENHOUSES

## QUAD PELLET BOILERS

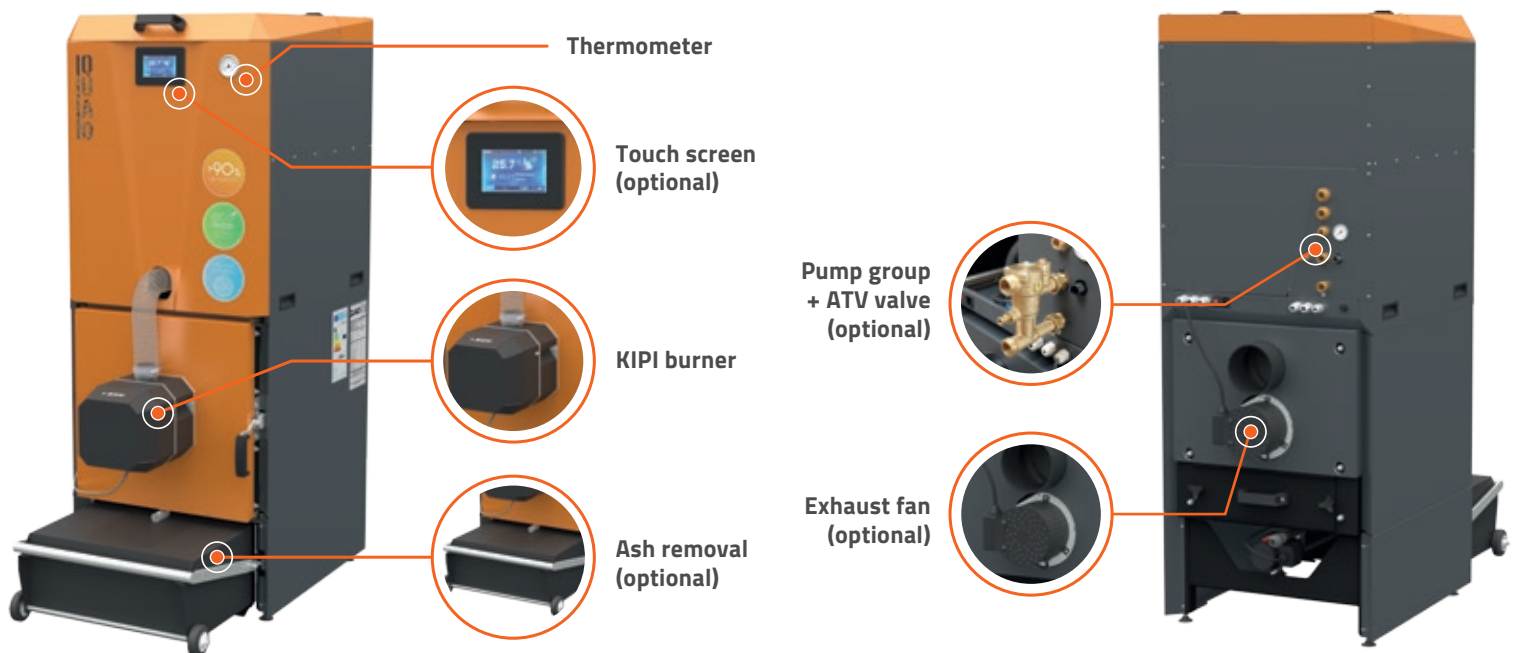
The Quad boiler has been designed for boiler rooms **with limited space**. Thanks its modular construction it might be adapted to the smaller spaces with silo above or to more spacious rooms with bigger external silo. The **self-cleaning burner, ash removal system** and the possibility of advanced control make it very easy to use, while ensuring high efficiency and low exhaust emissions.

### ADVANTAGES

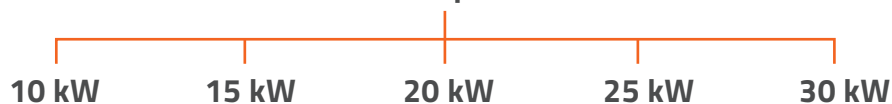
- ✓ Self-cleaning innovative burner.
- ✓ Modular.
- ✓ Made of high-quality stainless steel.
- ✓ Adaptable fuel tank inbuilt or external.
- ✓ Low dust emission.

The patented solution of the partition gives the possibility of **burning various fuels**, which significantly **reduces heating costs by up to 50%**. Mix pellets with such fuels as: cherry pits, oat, corn, etc. None boiler on the market has such a solution.

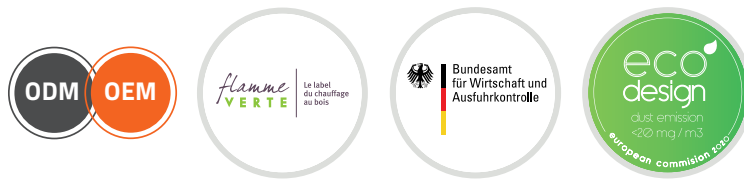
### BOILER CONSTRUCTION



Available powers:



## QUAD OPTIONS



## HIGH POWER BOILERS

Bio Max Plus pellet boilers work with pellet burners, which are state-of-the-art heating appliances. Designed so that it is possible to fuel with **ecological renewable fuels**. The boiler in the standard version is a single-function heating appliance, after connecting a hot water exchanger it is also ideal for heating water.

- ✓ The boiler construction is based on a system of flame tubes and reversible chambers.
- ✓ The exchanger and combustion chamber are made of high quality, attested steel sheet.
- ✓ At the front there is a lockable, three-part orifice, which is used to install the burner.
- ✓ At the back there is a steel flue which connects the boiler to the combustion system.
- ✓ A drawer to facilitate ash removal.
- ✓ Low emissions of dust and harmful compounds.

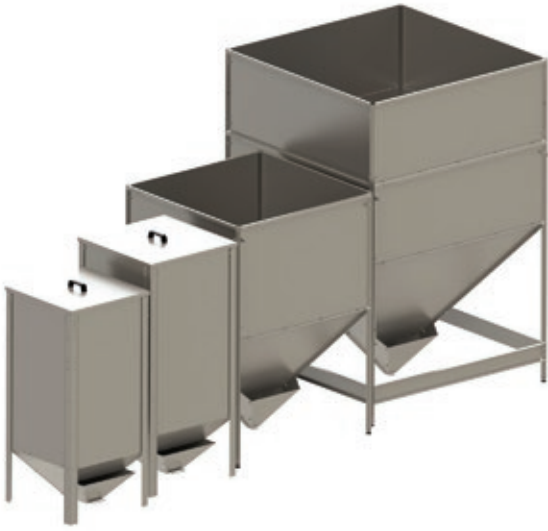


Available powers:





## PELLET STORAGE



KIPI Pellet hoppers are distinguished by their **modular structure, which makes them easier to transport and install on site.** They have been designed to make the most efficient use of the volume of the tank. They are made of galvanised sheet. They are adapted to feeders with an external 70 mm pipe. Moreover, we can prepare a custom made model for special customer needs.

Capacity	Height	Length & width
330 l	1260 mm	580 mm
440 l	1375 mm	640 mm
820 l	1400 mm	1000 mm
1200 l	1400 mm	1300 mm
1800 l	1800 mm	1300 mm

*We can prepare a custom made model for special customer needs.*

## PELLET FEEDING

The feeder is included in the burner kit. **It transports fuel from the container** and it works as a pellet dispenser. It is made of a stainless steel pipe and is additionally equipped with a control window which allows you to observe the feeder operation. It consists of a spiral placed in a stainless pipe that allows the transport of pellets from the container to the burner. The feeder is driven by a gear motor, while the pellet stream fed to the burner is regulated by the controller. We offer containers with a length of 2 to 5 m. In addition, we make non-standard feeders on request.



Vertical feeder (oblique)



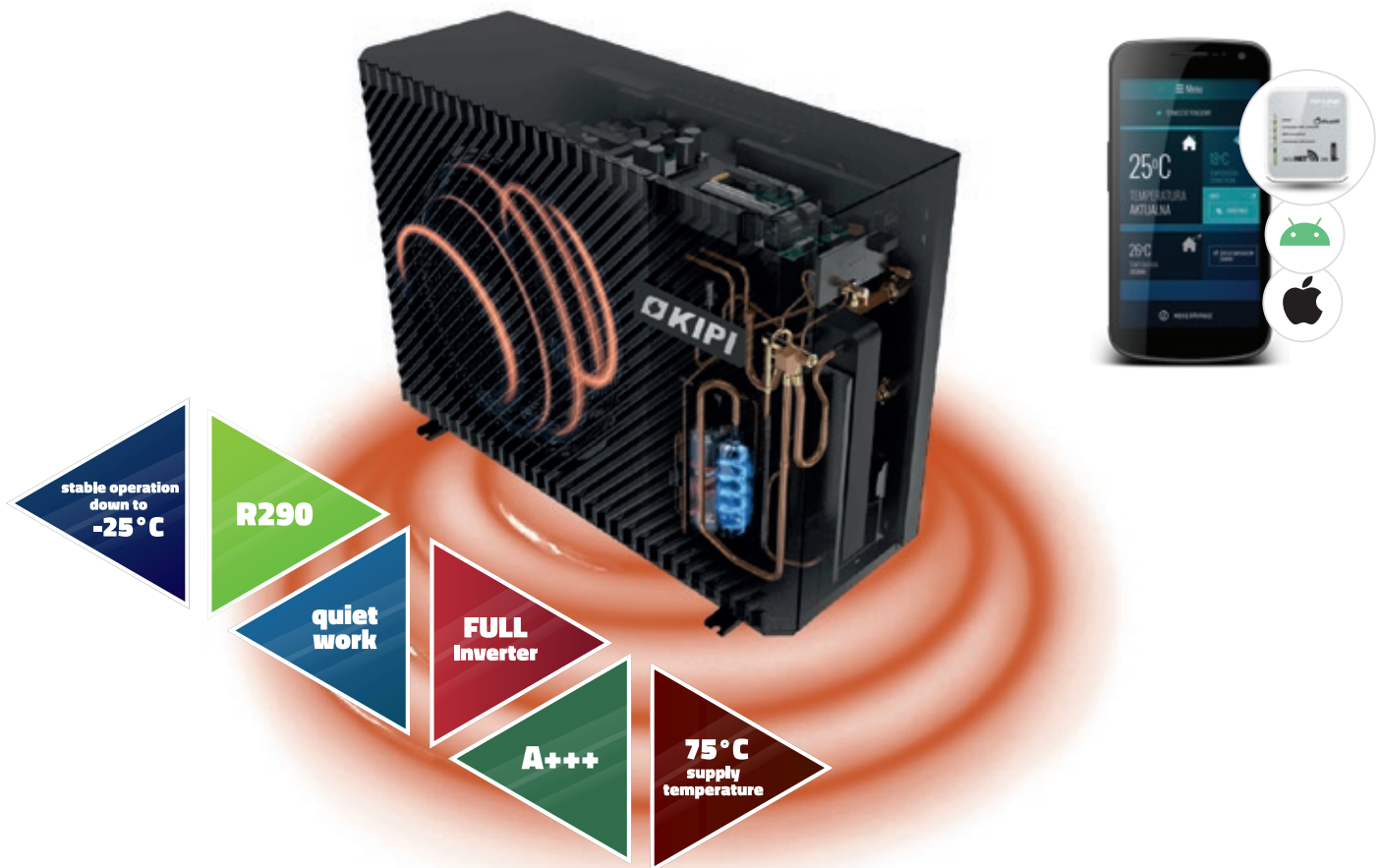
Horizontal feeder



**The KIPI Vacuum pneumatic pellet feeding system** is a solution that enables the transport of pellets over longer distances. It consists of two flexible pipes and a pellet hopper integrated with the boiler. The fuel is sucked in from the storage chamber by negative pressure generated by the compressor. Air returns to the warehouse via the second pipe. Such a system does not cause dust in the boiler room. The high feeding capacity allows you to quickly fill the buffer tank that is used during normal operation of the boiler. It is designed for owners of facilities with an area exceeding 1000 m

## HERO PREMIUM HEAT PUMPS

The modern HERO PREMIUM R290 heat pump guarantees efficient heating and cooling of the house and domestic hot water. The matte black ABS housing provides an aesthetic and modern look. The pump uses a fully inverter solution with the environmentally friendly R290 refrigerant.



- ✓ Support for three circuits, including two mixer circuits.
- ✓ Advanced installation options based on a clutch, buffer, three-way valve, HUW pumps.
- ✓ Cooperation with PV and solar installations as well as pellet and gas boilers.
- ✓ Remote software updates or via SD card.
- ✓ Dual function screen.

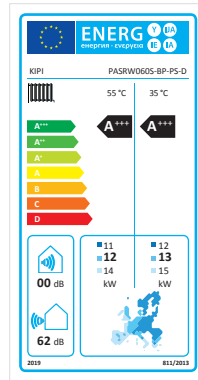
## HIGH ENERGY EFFICIENCY A+++

Targeted to the European market, the HERO PREMIUM R290 air-to-water heat pump has been developed using the latest heat pump technology and modern design to meet the stringent requirements of performance, stability and quiet operation. HERO PREMIUM R290 not only uses the R290 factor for its work, but also has the A+++ energy label. Thanks to this, this device is not only energy efficient, but also qualifies for the highest level of funding.

# HERO PREMIUM R290

## ABS – A STRUCTURE WITHOUT ANY SCREWS

A modern design with a corrugated surface and without any screws guarantees the smart appearance of the heat pump. ABS is resistant to corrosion what extends the lifespan of the device.



## 42dB (A) SILENT WORK

Owing to the unique, sound absorbent internal structure, the pump acoustic pressure is maintained at the level of 42 dB (A) within the distance of 1 m.

## REFRIGERANT

The applied R290 refrigerant is an optimal solution that is environmentally friendly and at the same time allows for the highest energy efficiency parameters and a high supply temperature of up to 75 ° C. It directly affects the better operation of the pump and the greater efficiency of the device using less refrigerant.

## STABLE WORK AT -25°C

Thanks to the inverter technology, HERO PREMIUM R290 can operate efficiently at -25 ° C, maintain a high COP and stable operation.

Performance graph  
HERO PREMIUM R290



## The technical specifications

### POWER AND EFFICIENCY

	HERO PREMIUM Q9	HERO PREMIUM Q15	HERO PREMIUM Q22
Heating power at A7/W35 [kW]	3,21   9,14 (min.   max.)	5,34   15,37 (min.   max.)	7,94   22,62 (min.   max.)
Heating power at A2/W35 [kW]	2,93   8,34 (min.   max.)	4,92   14,01 (min.   max.)	7,24   20,62 (min.   max.)
Heating power at A-7/W35 [kW]	2,49   7,10 (min.   max.)	4,19   11,93 (min.   max.)	6,16   17,56 (min.   max.)
Heating power at A-7/W35 [kW]	2,03   5,78 (min.   max.)	3,41   9,71 (min.   max.)	5,01   14,29 (min.   max.)
Maximum power supply temperature [°C]	75	75	75
Cooling power at A35/W7 [kW]	1,20   5,72	1,05   3,39	1,89   5,09
COP at A2/W35	4,69 (partial load)	4,74 (partial load)	4,64 (partial load)
COP at A7/W35	5,04 (partial load)	5,09 (partial load)	4,99 (partial load)
Voltage and current [V;A]	230   13,5	3x400   10,5	3x400   15,8
Maximum electricity consumption [kW]	3	5,3	9
Application limits [°C]	from -25 to 43	from -25 to 43	from -25 to 43

### ACOUSTICS

External acoustic power 1m [dB(A)]	42	44	47
Minimum external acoustic power 1m [dB(A)]	57	58	62

### GENERAL DATA

Hot water storage tank [l]	-	-	-
Cooling	Yes	Yes	Yes
Electric heater [kW]*	3, 6, 9	3, 6, 9	3, 6, 9
Hermetically closed	Yes	Yes	Yes
Cooling medium	R290	R290	R290
Medium quantity [kg]	0,50	0,85	1,30
CO2 equivalent [t CO2]	0,0015	0,0026	0,0039
Heat pump dimensions Width x Depth x Height [mm]	1167 x 407 x 795	1287 x 458 x 928	1250 x 540 x 1330
Packed heat pump weight   net [kg]	100   90	123   100	175   155

### ENERGY EFFECTIVENESS CLASS

Device with regulator - supply temperature 35 °C	A+++	A+++	A+++
Device with regulator - supply temperature 55 °C	A+++	A++	A++

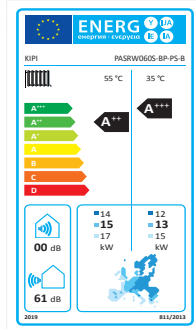
\*Available in a set with a HYDROBOX



# HERO PREMIUM R32

## ABS – A STRUCTURE WITHOUT ANY SCREWS

A modern design with a corrugated surface and without any screws guarantees the smart appearance of the heat pump. ABS is resistant to corrosion what extends the lifespan of the device.



## 42dB (A) SILENT WORK

Owing to the unique, sound absorbent internal structure, the pump acoustic pressure is maintained at the level of 42 dB (A) within the distance of 1 m.

## REFRIGERANT

Comparing with the commonly used cooling media, such as R-22 and R-410A, R32 has two thirds lower potential for creating the greenhouse effect and it is characteristic for an insignificant environmental impact.

## STABLE WORK AT -25°C

Owing to Inverter EVI unique technology, Hero Premium may function efficiently at the temperature of -25°C, maintain a high COP coefficient and reliable stability.



Performance graph  
HERO PREMIUM R32

## The technical specifications

### POWER AND EFFICIENCY

	HERO PREMIUM Q8	HERO PREMIUM Q12	HERO PREMIUM Q21
Heating power at A7/W35 [kW]	2,42   8,72 (min.   max.)	4,77   12,69 (min.   max.)	7,40   21,67 (min.   max.)
Heating power at A2/W35 [kW]	1,74   7,48 (min.   max.)	3,48   10,93 (min.   max.)	6,85   19,13 (min.   max.)
Heating power at A-7/W35 [kW]	1,32   6,02 (min.   max.)	3,17   8,80 (min.   max.)	5,51   14,85 (min.   max.)
Heating power at A-7/W55 [kW]	1,07   4,82 (min.   max.)	2,52   7,88 (min.   max.)	4,40   12,13 (min.   max.)
Maximum power supply temperature [°C]	60	60	60
Cooling power at A35/W7 [kW]	1,56   6,0	2,20   10,0	6,3   18,4
COP at A2/W35	4,45 (partial load)	4,34 (partial load)	4,53 (partial load)
COP at A7/W35	4,85 (partial load)	4,91 (partial load)	5,10 (partial load)
Voltage and current [V;A]	230   13	3x400   7,6	3x400   7,6
Maximum electricity consumption [kW]	2,9	4,4	6,16
Application limits [°C]	from -25 to 43	from -25 to 43	from -25 to 43

### ACOUSTICS

External acoustic power 1m [dB(A)]	57	60	61
Minimum external acoustic power 1m [dB(A)]	42	45	46

### GENERAL DATA

Hot water storage tank [l]	-	-	-
Cooling	Yes	Yes	Yes
Integrated electric heating element [kW]*	3, 6, 9	3, 6, 9	3, 6, 9
Hermetically closed	Yes	Yes	Yes
Cooling medium	R32	R32	R32
Medium quantity [kg]	1,3	1,8	2,3
CO2 equivalent [t CO2]	0,88	1,22	1,55
Heat pump dimensions Width x Depth x Height [mm]	1167 x 407 x 795	1287 x 458 x 928	1250 x 540 x 1330
Packed heat pump weight   net [kg]	102   90	123   100	175   155

### ENERGY EFFECTIVENESS CLASS

A device with a regulator – power supply temp. 35°C	A+++	A+++	A+++
A device with a regulator – power supply temp. 55°C	A++	A++	A++

\*Available in a set with a HYDROBOX

## HYDROBOX STANDARD

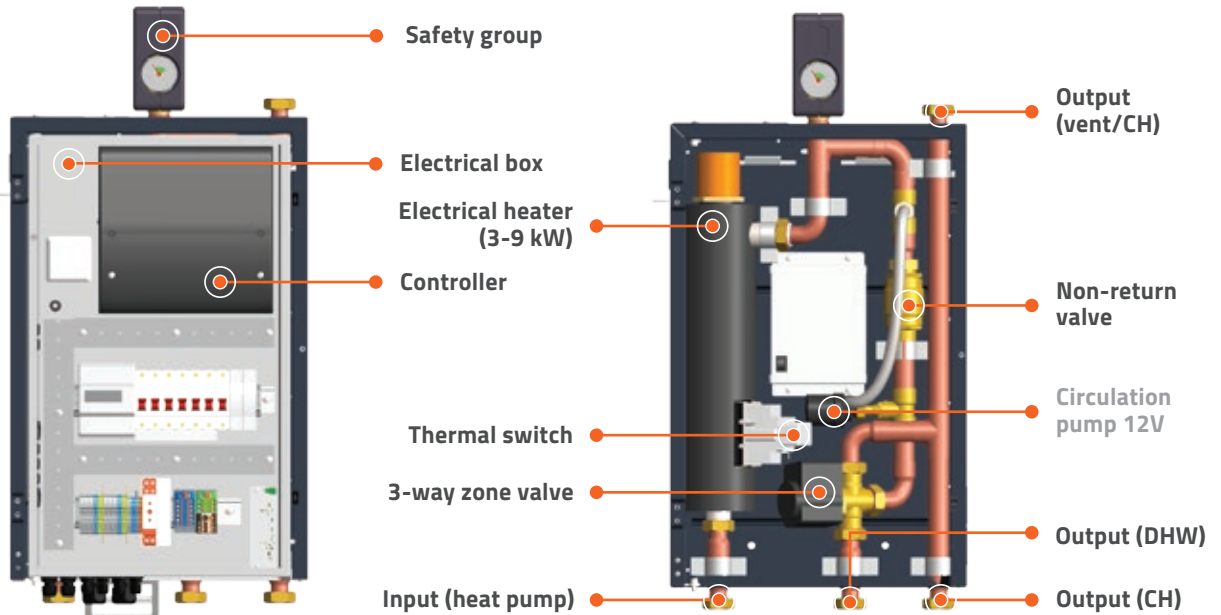


### ADVANCED HYDROBOX MODULE

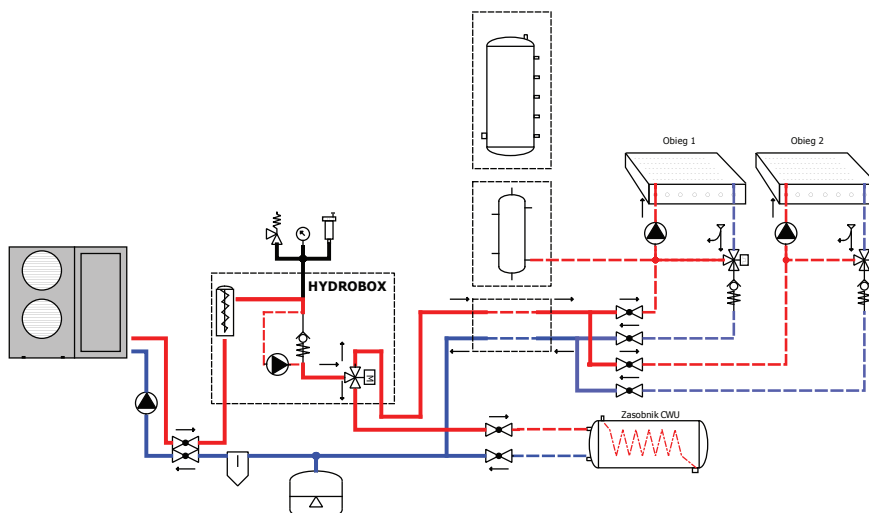
The Hydrobox not only protects the heat pumps from frost, even if the electricity is out for 12 h. It is also equipped with an energy meter and an intelligent controller that optimises the pump performance in real time. With its minimalist and compact design, this special hydrobox hides the entire installation and gives the location a modern touch. The Hydrobox is available in several heater power options - from 3 kW to 9 kW.

### FEATURES

- ✓ Dual-function control panel with mobile thermostat function.
- ✓ Electric heater: 3 kW, 6 kW, 9 kW - supports pump operation at lower temperatures.
- ✓ Hydrobox reduces installation time by ONE DAY.
- ✓ Energy meter.
- ✓ Hydraulic flow Kvs 8 m<sup>3</sup>/h.



## HYDRAULIC CONNECTION DIAGRAM



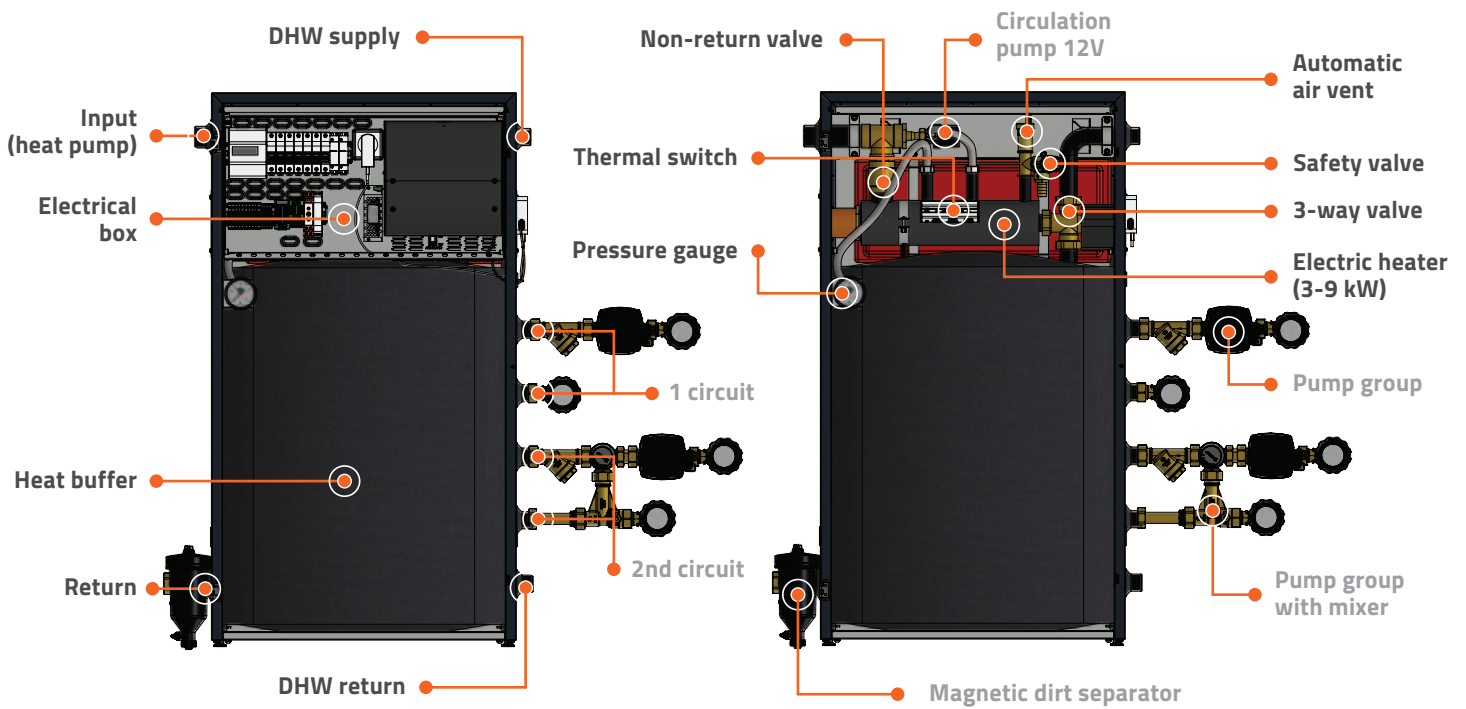
# HYDROBOX VELOX WITH BUFFER

PREMIERE  
2023

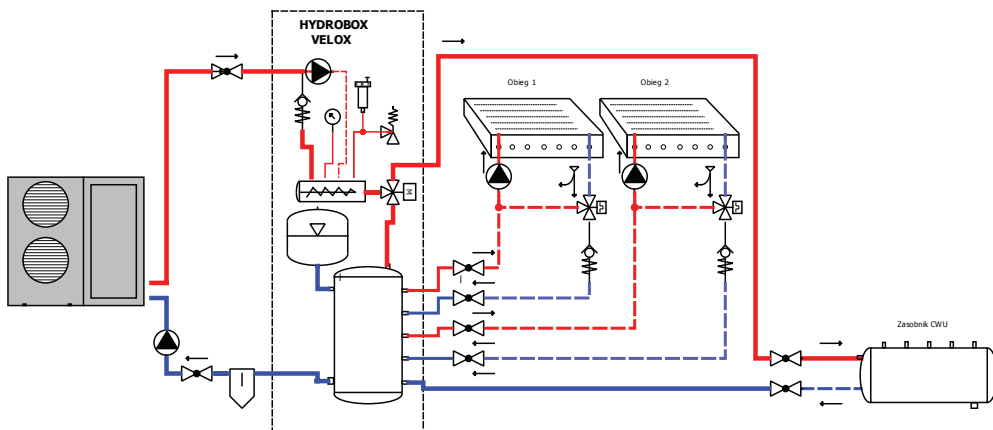
## VELOX COMPREHENSIVE, CONVENIENT AND EFFICIENT HEAT PUMP INSTALLATION.

### FEATURES

- ✓ Output for two circuits.
- ✓ Dual-function control panel with mobile thermostat function.
- ✓ Integrated buffer.
- ✓ Electric heater: 3 kW, 6 kW, 9 kW - supports pump operation at lower temperatures.
- ✓ Hydrobox reduces installation time by ONE DAY.
- ✓ Energy meter.
- ✓ Hydraulic flow Kvs 12 m<sup>3</sup>/h.

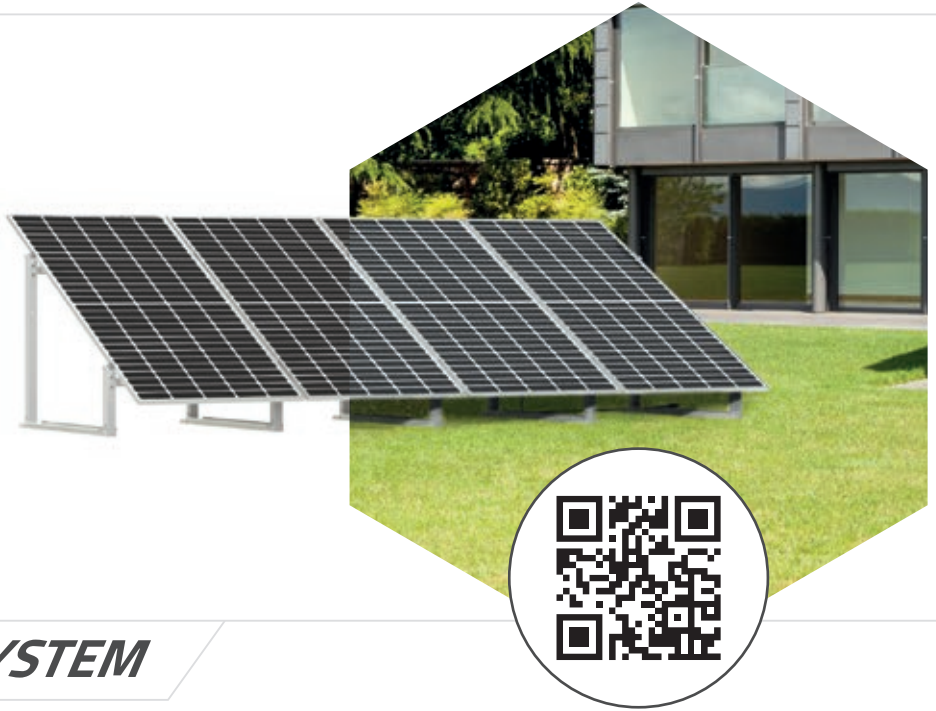


## HYDRAULIC CONNECTION DIAGRAM





- ✓ Photovoltaic kit for self-assembly.
- ✓ Ground-mounted installation.
- ✓ Installation output 2 Kwh.
- ✓ High-quality photovoltaic panels.
- ✓ Use of microinverter.- Low voltage.
- ✓ Flexible installation.



## CUSTOM ASSEMBLY SYSTEM

We manufacture customised assembly systems. We use **Magnelis®** and stainless steel for our structures to ensure the longest possible product life.



With full technological and construction facilities, we carry out projects to individual customer orders.

## **OUR OFFER**

We offer outsourcing services, especially boiler bodies, hydroboxes etc.

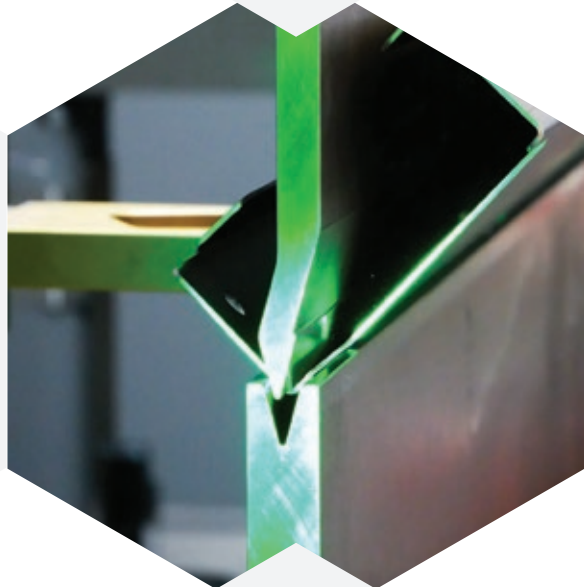


### **LASER CUT**

We cut sheet metal, pipes and profiles using a modern Bystronic laser ByStar Fiber.

### **PRESS BENDING**

We perform complex bending services using the technologically advanced Xpert press brake.



### **ADDITIONAL SERVICES**

We also deal with TIG/MIG welding, galvanization, powder coating and machining.



# www.kipi.pl

ul. Obornicka 71  
62-002 Suchy Las  
T: +48 61 811 70 37  
E: biuro@kipi.pl

**www.kipi.pl**

 / kipizrodlaciepla    / kipi\_zrodla\_ciepla



European Union  
European Regional  
Development Fund

